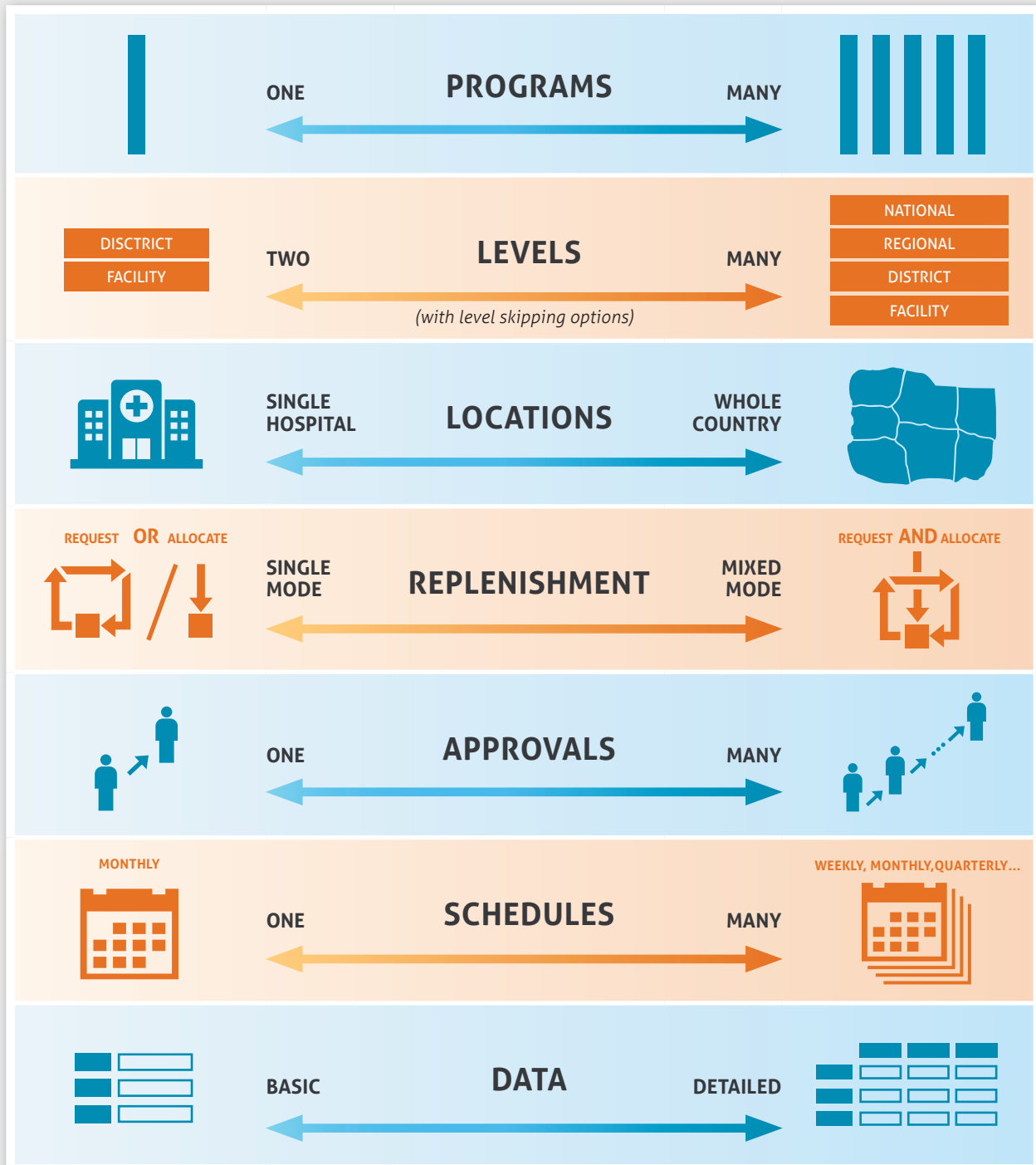


OpenLMIS: FLEXIBLE & CONFIGURABLE



OpenLMIS

OpenLMIS is designed to be configurable to meet the unique needs of any health supply chain. The system can be easily configured across multiple dimensions—a partial list appears below. Each option can be customized for individual programs and for any group of facilities.



OpenLMIS VERSION 3 GLOBAL FEATURE LIST

REPLENISHMENT CYCLE

Basic Capabilities and Configurability

- ◆ Multiple program support (i.e. Malaria, Family Planning, HIV, Essential Meds, EPI, etc)
- ◆ Global GTIN standards support at the trade item level
- ◆ Highly configurable associations between facilities, programs and products
- ◆ Mature product level support (with 45 specific attributes; can define associations across multiple programs and facilities)
- ◆ Products assignable to one or more programs and facility types
- ◆ **Offline and online data collection support depending on workflow**
- ◆ Multiple customizable operating schedules (e.g., monthly, quarterly, interleaved quarters, schedules with non-uniform periods, etc.)
- ◆ Multi-tier requisition/order/fulfillment loops, including mixed requisition & allocation-based fulfillment process
- ◆ Level skipping for both requisition and allocation fulfillment processes

Requisition-Based Replenishment ("pull" process)

- ◆ Customizable requisition form for each program
- ◆ Products grouped on requisition form by product category (anesthetics, antibiotics, etc) – assignable and sortable by Program
- ◆ Arithmetic validation of user-entered data
- ◆ Optional automatic calculation of dependent values (an alternative to validation)
- ◆ Configurable work flow for review and approval of Requisitions, with one or more review steps
- ◆ Automatic notifications of pending work for all users involved in the reorder workflow
- ◆ Shipment/receivables data from previous cycle is automatically populated on new Requisition
- ◆ Emergency requisitioning, with optional customized format
- ◆ Optimized to minimize bandwidth - only changed data is submitted back to the server

Architecture Design

- ◆ Modular architecture: API-driven
- ◆ Customizable user interface
- ◆ Automated test coverage
- ◆ Fully documented manual regression testing scripts
- ◆ Approval workflow, supply lines, and delivery options

Order, Shipment, and Receiving Process

- ◆ Approved requisitions are released as orders
- ◆ Generate order export files for an ERP system, per individual Requisition (transferred via FTP in CSV format)
- ◆ Format of order export files is customizable
- ◆ Orders and associated export files can be manually reviewed
- ◆ Import shipment file from ERP system using FTP and .csv (API available)
- ◆ Generate, print, and manage "Proof of Delivery" (POD)

Inventory Management

- ◆ Electronic stock card (via configuration)
- ◆ Ongoing tracking of adjustments (via configuration)
- ◆ Batch management and support (via configuration)
- ◆ Track stock movements (via configuration)
- ◆ Automatic requisitioning based on current inventory (via configuration)
- ◆ Support receiving stock via informed push, ad hoc, or regular fulfillment cycles (via configuration)
- ◆ Support receiving stock via informed push, ad hoc, or regular fulfillment cycles (via configuration)

OpenLMIS VERSION 3 GLOBAL FEATURE LIST

SYSTEM DEPLOYMENT AND ADMINISTRATION

- ◆ Multi-language support and customization across user interface elements using professional translation plugin
- ◆ Bulk upload of country-specific data
- ◆ Configure & define relationships between programs, products, facilities and more via the user interface
- ◆ One-click installation
- ◆ User & roles/rights management
- ◆ Approval workflow, supply lines and delivery options

User Management and Permissions

- ◆ Create & delete users. Password recovery & reset
- ◆ Define role-based security for operational workflows and administrative responsibilities

Integrations and Interoperability

- ◆ FTP configuration for order and shipment files (FTP/.csv/API)
- ◆ **Defined APIs across the system for easy integration with third-party systems at multiple points (includes mobile applications)**
- ◆ APIs available across the system for extension points. API-driven so that new services and modules can be developed while keeping core features & functionalities in place

REPORTING AND DATA VISUALIZATION

- ◆ Reporting framework to support integration with external reporting tool – allowing users to make ad-hoc and customized reports
- ◆ Basic dynamic reports with ability to filter and sort based on program, period, facility, and more
- ◆ Dashboards

OpenLMIS Community funders and participants include:



OpenLMIS